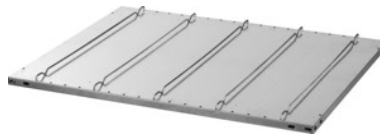


Inclined shelf, galvanised, Width 1000 mm, Depth: 800mm



Order data

Order number	990610 800
GTIN	4004514218841
Item class	96P

Description

Version:

Horizontal divider guides can be adjusted at 50 mm steps. The front lengthways bar is raised 15 mm and thus prevents goods falling off the shelves.

Supplied with:

Each with 5 divider guides. 2 longitudinal bars. 2 lateral guides.

Technical description

Width	1000 mm
Depth	800 mm
suitable for inclined shelf racking	990600 – 990602
Storage shelf version	slotted shelf
Storage shelf version	fixed shelf
Storage shelf version	Shelf with anti-roll lip
Application range	Inclined shelf racking
Shelf load capacity / maximum distributed shelf load (on metal)	150 kg
Shelf thickness	25 mm
Material	galvanized
Product name attribute	Width 1000 mm

Type of product

Storage shelf