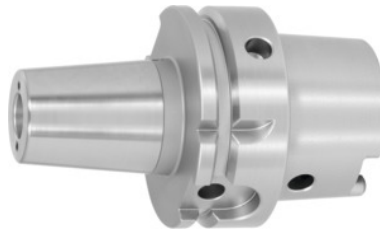


Garant

Shrink-fit chuck with cooling channel bores and strengthened walls, HSK-A 63 short, Clamping range \varnothing D1: 12mm



Order data

Order number	308296 12
GTIN	4045197701510
Item class	31A

Description

Version:

- High-temperature steel.
- Integral tool length adjustment, adjustment track 10 mm.
- For HSS and carbide.
- Shanks hard turned (for smooth running!).
- With Balluffchip bore
- Bead-blasted
- With cooling channel bores, tapped for plugging.

Advantage:

Optimised design. Vibration-damping effect, better workpiece surface finish, protects spindle and tool.

Application:

For clamping tools with parallel shank to h6 tolerance. Suitable for inductive, contact and hot-air shrink units.

Optional extras:

Shrink-fit chuck adaptors No. 302410 – 302416. Shrink-fit units, accessories No. 354210 – 304755.

Cooling channel bore: lockable

Clamping \varnothing D₁: 12 mm

Overhang dimension A: 70 mm

External \varnothing D: 33.3 mm

\varnothing D₂: 26.5 mm

Technical description

Overhang dimension A	70 mm
Clamping $\varnothing D_1$	12 mm
$\varnothing D_2$	26.5 mm
External $\varnothing D$	33.3 mm
Cooling channel bore	lockable
Adapter	HSK-A 63 short
Arbor standard	DIN 69893
Arbor standard	ISO 12164-1
Shape	A
Balance quality G at rotational speed	G 2.5 at 25,000 rpm
Concentricity	$\leq 3 \mu\text{m}$
Machining strategy	HPC
Machining strategy	HSC
Type of product	Shrink-fit chuck

Accessories

Shrink-fit unit Type SU1	354210 SU1
Cooling adapter short 4.5° for clamping $\varnothing 9,1-12$ mm	354235 9,1-12
Subframe cupboard	354290
Cooling adapter long 4.5° for clamping $\varnothing 9,1-12$ mm	354236 9,1-12
Cooling unit Type CU1	354215 CU1
Screening plate for coil SU1 for clamping $\varnothing 6-12$ mm	354240 6-12