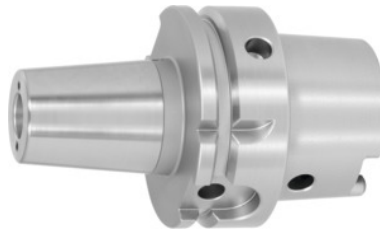


Garant

Shrink-fit chuck with cooling channel bores and strengthened walls, HSK-A 63 short, Clamping range \varnothing D1: 20mm


Order data

Order number	308296 20
GTIN	4045197701534
Item class	31A

Description
Version:

- High-temperature steel.
- Integral tool length adjustment, adjustment track 10 mm.
- For HSS and carbide.
- Shanks hard turned (for smooth running!).
- With Balluffchip bore
- Bead-blasted
- With cooling channel bores, tapped for plugging.

Advantage:

Optimised design. Vibration-damping effect, better workpiece surface finish, protects spindle and tool.

Application:

For clamping tools with parallel shank to h6 tolerance. Suitable for inductive, contact and hot-air shrink units.

Optional extras:

Shrink-fit chuck adaptors No. 302410 – 302416. Shrink-fit units, accessories No. 354210 – 304755.

Cooling channel bore: lockable

Clamping \varnothing D₁: 20 mm

Overhang dimension A: 75 mm

External \varnothing D: 43.1 mm

\varnothing D₂: 35.5 mm

Technical description

Ø D ₂	35.5 mm
Clamping Ø D ₁	20 mm
Overhang dimension A	75 mm
External Ø D	43.1 mm
Cooling channel bore	lockable
Adapter	HSK-A 63 short
Arbor standard	DIN 69893
Arbor standard	ISO 12164-1
Shape	A
Balance quality G at rotational speed	G 2.5 at 25,000 rpm
Concentricity	≤ 3 µm
Machining strategy	HPC
Machining strategy	HSC
Type of product	Shrink-fit chuck

Accessories

Shrink-fit unit Type SU1	354210 SU1
Cooling unit Type CU1	354215 CU1
Subframe cupboard	354290
Cooling adapter long 4.5° for clamping Ø 16,1-22 mm	354236 16,1-22
Cooling adapter short 4.5° for clamping Ø 16,1-22 mm	354235 16,1-22
Screening plate for coil SU1 for clamping Ø 12-20 mm	354240 12-20