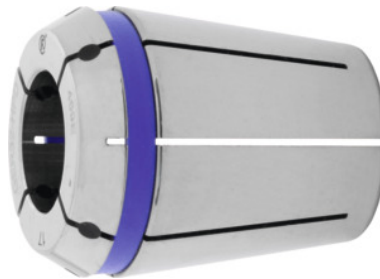




## ER collet HP with seal, ER 16, Nominal clamping $\varnothing$ d: 8mm



### Order data

Order number	309371 8
GTIN	2050001767592
Item class	33F

### Description

#### Version:

**System concentricity** and repetition accuracy **3  $\mu$ m** ( $3 \times D$ , maximum = 50 mm), in conjunction with FAHRION CENTRO P chucks.

**Corrosion protection:** Collets fully coated with FAHRION Protect, including the functional faces.

#### Advantage:

The coating increases the service life of the collet and ensures full functionality and precision.

#### Suitable for:

Precision ER collet chuck CENTRO P.

#### Note:

- **Optimum concentricity only when used in CENTRO P chucks.**
- **Clamping range h10 (nominal size only).**

With **seal** for through-coolant feed (for use up to 60 bar). **Similar to** ISO 15488-A.

### Technical description

Nominal clamping $\varnothing$ d	8 mm
Adapter	ER 16
Standard	ISO 15488-A
Concentricity	$\leq 2 \mu$ m
Type	425 E

External Ø D	16.7 mm
Overall length L	27.5 mm
Type of product	Collet