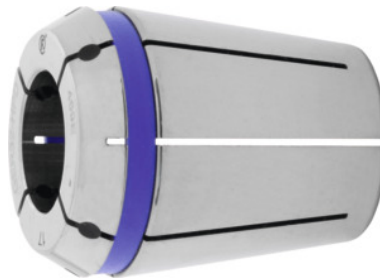




ER collet HP with seal, ER 25, Nominal clamping \varnothing d: 15mm



Order data

Order number	309374 15
GTIN	2050001768155
Item class	33F

Description

Version:

System concentricity and repetition accuracy **3 μ m** ($3 \times D$, maximum = 50 mm), in conjunction with FAHRION CENTRO P chucks.

Corrosion protection: Collets fully coated with FAHRION Protect, including the functional faces.

Advantage:

The coating increases the service life of the collet and ensures full functionality and precision.

Suitable for:

Precision ER collet chuck CENTRO P.

Note:

- **Optimum concentricity only when used in CENTRO P chucks.**
- **Clamping range h10 (nominal size only).**

With **seal** for through-coolant feed (for use up to 60 bar). **Similar to** ISO 15488-A.

Technical description

Nominal clamping \varnothing d	15 mm
Adapter	ER 25
Standard	ISO 15488-A
Concentricity	$\leq 2 \mu$ m
Type	429 E

External Ø D	25.7 mm
Overall length L	34 mm
Type of product	Collet