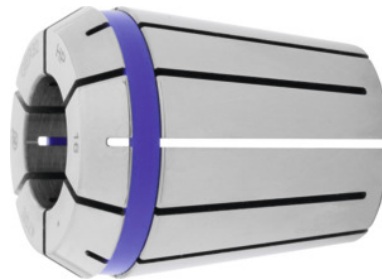




ER collet HP, ER 25, Nominal clamping \varnothing d: 6mm



Order data

Order number	309373 6
GTIN	2050001765253
Item class	39Y

Description

Version:

System concentricity and repetition accuracy **3 μ m** ($3 \times D$, maximum = 50 mm), in conjunction with FAHRION CENTRO P chucks.

Corrosion protection: Collets fully coated with FAHRION Protect, including the functional faces.

Advantage:

The coating increases the service life of the collet and ensures full functionality and precision.

Suitable for:

Precision ER collet chuck CENTRO P.

Note:

- **Optimum concentricity only when used in CENTRO P chucks.**
- **Clamping range h10 (nominal size only).**

Technical description

Nominal clamping \varnothing d	6 mm
Adapter	ER 25
Standard	ISO 15488-B
Concentricity	$\leq 2 \mu$ m
Type	430 E

External Ø D	26 mm
Overall length L	34 mm
Type of product	Collet