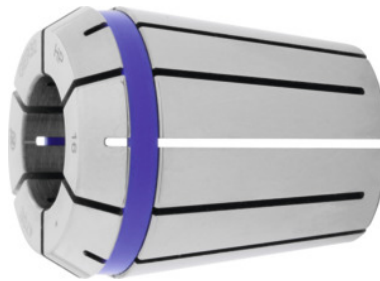


FAHRION®
FAHRENDEN PRESSION**ER collet HP, ER 40, Nominal clamping Ø d: 20mm****Order data**

Order number	309379 20
GTIN	2050001766274
Item class	39Y

Description**Version:**

System concentricity and repetition accuracy **3 µm** (3×D, maximum = 50 mm), in conjunction with FAHRION CENTRO P chucks.

Corrosion protection: Collets fully coated with FAHRION Protect, including the functional faces.

Advantage:

The coating increases the service life of the collet and ensures full functionality and precision.

Suitable for:

Precision ER collet chuck CENTRO P.

Note:

- **Optimum concentricity only when used in CENTRO P chucks.**
- **Clamping range h10 (nominal size only).**

Technical description

Nominal clamping Ø d	20 mm
Adapter	ER 40
Standard	ISO 15488-B
Concentricity	≤ 2 µm
Type	472 E

External Ø D	41 mm
Overall length L	46 mm
Type of product	Collet