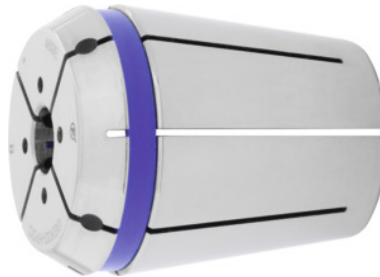


**FAHRION®**  
FAHRENDEN PROZESSOR
**ER collet HP with seal and spray nozzles, ER 16, Nominal clamping Ø d: 8mm**

**Order data**

Order number	309372 8
GTIN	2050001766823
Item class	33F

**Description**
**Version:**

**System concentricity** and repetition accuracy **3 µm** (3×D, maximum = 50 mm), in conjunction with FAHRION CENTRO P chucks.

**Corrosion protection:** Collets fully coated with FAHRION Protect, including the functional faces.

**Advantage:**

The coating increases the service life of the collet and ensures full functionality and precision.

**Suitable for:**

Precision ER collet chuck CENTRO P.

**Note:**

- **Optimum concentricity only when used in CENTRO P chucks.**
- **Clamping range h10 (nominal size only).**

With **seal** for through-coolant feed (for use up to 60 bar) and **spray nozzles**. **Similar to ISO 15488-A.**

**Technical description**

Nominal clamping Ø d	8 mm
Adapter	ER 16
Standard	ISO 15488-A
Concentricity	≤ 2 µm

Type	425 E
External Ø D	16.7 mm
Overall length L	27.5 mm
Type of product	Collet