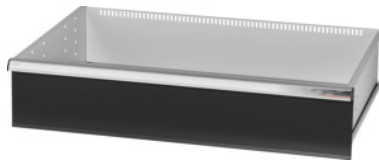


Garant GRIDLINE

**Drawer, 200 kg, 36×24G, Drawer front height: 200mm****Order data**

Order number	931355 200
GTIN	4062406063863
Item class	9GK

**Description****Version:**

**100% full extension drawers** with differential runners. Aluminium handle with labelling strips that can be exchanged and rewritten.

Slots at 25 mm intervals to take slotted dividers (from drawer front height 75 mm).

Load capacity 200 kg.

**Suitable for:**

Tool cabinet casing 40×28G No. 931335.

**Supplied with:**

Drawers each complete with 1 pair drawer runner rails.

**Colour:**

Drawer body RAL 7035 light grey, drawer fronts RAL 7016 anthracite, **powder-coated**. **Drawer body not configurable, always RAL 7035 light grey.**

**Technical description**

Drawer/pull-out shelf load capacity	200 kg
Front height	200 mm
Weight	22 kg
Usable height	175 mm
Drawer usable area in G	36×24
Usable depth in G	24
Usable width in G	36

Application range	Tool cabinet
Usable width	900 mm
Usable depth	600 mm
with individual drawer release system	no
Material thickness	1.2 mm
Drawer runner extension (partial/full extension)	100 %
Colour selection	RAL 9002, 7035, 7005, 7016, 6011, 5018, 5012, 5011, 5005, 3003
Drawer usable width × usable depth in G	36×24G
Type of product	Drawer

## Accessories

Labelling strip set 10 pieces Drawer usable width in G 36	951030 36
Handle end caps 20 pieces Type 10	951025 10
Pack of PVC covers for handles 10 pieces Drawer usable width in G 36	951032 36