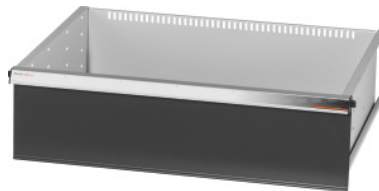


Garant GRIDLINE

Drawer, 75 kg, 26×20G, Drawer front height: 300mm



Order data

Order number	930633 300
GTIN	4062406064037
Item class	9GK

Description

Version:

100% full extension drawers with differential runners. Aluminium handle with labelling strips that can be exchanged and rewritten.

Slots at 25 mm intervals to take slotted dividers (from drawer front height 75 mm).

Load capacity 75 kg.

Suitable for:

Tool cabinet casing 30×24G No. 930625.

Supplied with:

Drawers each complete with 1 pair drawer runner rails.

Colour:

Drawer body RAL 7035 light grey, drawer fronts RAL 7016 anthracite, **powder-coated. Drawer body not configurable, always RAL 7035 light grey.**

Technical description

Usable height	275 mm
Front height	300 mm
Weight	19 kg
Drawer usable area in G	26×20
Drawer/pull-out shelf load capacity	75 kg
Usable depth in G	20

Usable width in G	26
Application range	Tool cabinet
Usable width	650 mm
Usable depth	500 mm
with individual drawer release system	no
Material thickness	1.2 mm
Drawer runner extension (partial/full extension)	100 %
Colour selection	RAL 9002, 7035, 7005, 7016, 6011, 5018, 5012, 5011, 5005, 3003
Drawer usable width × usable depth in G	26×20G
Type of product	Drawer

Accessories

Pack of PVC covers for handles 10 pieces Drawer usable width in G 26	951032 26
Non-slip mats set for drawers, 5 pieces Dimension in G 26X20	951885 26X20
Handle end caps 20 pieces Type 10	951025 10
Labelling strip set 10 pieces Drawer usable width in G 26	951030 26