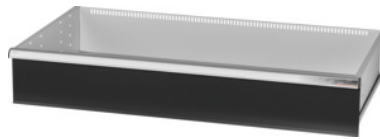


Garant GRIDLINE

Drawer, 200 kg, 46×24G, Drawer front height: 200mm**Order data**

| | |
|--------------|---------------|
| Order number | 931455 200 |
| GTIN | 4062406065003 |
| Item class | 9GK |

Description**Version:**

100% full extension drawers with differential runners. Aluminium handle with labelling strips that can be exchanged and rewritten.

Slots at 50-mm/2G intervals to take slotted dividers (from drawer front height 75 mm).

Load capacity 200 kg.

Suitable for:

Tool cabinet casing 50×28G No. 931435.

Supplied with:

Drawers each complete with 1 pair drawer runner rails.

Colour:

Drawer body RAL 7035 light grey, drawer fronts RAL 7016 anthracite, **powder-coated. Drawer body not configurable, always RAL 7035 light grey.**

Note:

Only GridLine divider inserts can be used in the widths 2G, 4G, 6G, 8G, 10G or 12 G.

Technical description

| | |
|-------------------------------------|--------|
| Weight | 26 kg |
| Drawer usable area in G | 46×24 |
| Usable height | 175 mm |
| Front height | 200 mm |
| Drawer/pull-out shelf load capacity | 200 kg |
| Usable depth in G | 24 |

| | |
|--|--|
| Usable width in G | 46 |
| Application range | Tool cabinet |
| Usable depth | 600 mm |
| Usable width | 1150 mm |
| with individual drawer release system | no |
| Material thickness | 1.2 mm |
| Drawer runner extension (partial/full extension) | 100 % |
| Colour selection | RAL 9002, 7035, 7005, 7016, 6011, 5018, 5012, 5011, 5005, 3003 |
| Drawer usable width × usable depth in G | 46×24G |
| Type of product | Drawer |

Accessories

| | |
|---|-----------|
| Pack of PVC covers for handles10 pieces Drawer usable width in G 46 | 951032 46 |
| Labelling strip set10 pieces Drawer usable width in G 46 | 951030 46 |
| Handle end caps20 pieces Type 10 | 951025 10 |