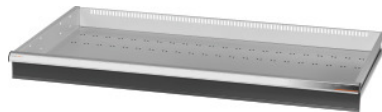


Garant GRIDLINE

Drawer, 200 kg, 46×24G, Drawer front height: 100mm**Order data**

Order number	931455 100
GTIN	4062406064976
Item class	9GK

Description**Version:**

100% full extension drawers with differential runners. Aluminium handle with labelling strips that can be exchanged and rewritten.

Slots at 50-mm/2G intervals to take slotted dividers (from drawer front height 75 mm).

Load capacity 200 kg.

Suitable for:

Tool cabinet casing 50×28G No. 931435.

Supplied with:

Drawers each complete with 1 pair drawer runner rails.

Colour:

Drawer body RAL 7035 light grey, drawer fronts RAL 7016 anthracite, **powder-coated. Drawer body not configurable, always RAL 7035 light grey.**

Note:

Only GridLine divider inserts can be used in the widths 2G, 4G, 6G, 8G, 10G or 12 G.

Technical description

Front height	100 mm
Weight	20 kg
Usable height	75 mm
Drawer/pull-out shelf load capacity	200 kg
Drawer usable area in G	46×24
Usable depth in G	24

Usable width in G	46
Application range	Tool cabinet
Usable depth	600 mm
Usable width	1150 mm
with individual drawer release system	no
Material thickness	1.2 mm
Drawer runner extension (partial/full extension)	100 %
Colour selection	RAL 9002, 7035, 7005, 7016, 6011, 5018, 5012, 5011, 5005, 3003
Drawer usable width × usable depth in G	46×24G
Type of product	Drawer

Accessories

Pack of PVC covers for handles10 pieces Drawer usable width in G 46	951032 46
Labelling strip set10 pieces Drawer usable width in G 46	951030 46
Handle end caps20 pieces Type 10	951025 10