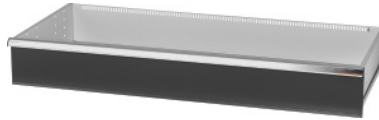


Garant GRIDLINE

**Drawer, 200 kg, 56×24G, Drawer front height: 300mm****Order data**

Order number	931555 300
GTIN	4062406065096
Item class	9GK

**Description****Version:**

**100% full extension drawers** with differential runners. Aluminium handle with labelling strips that can be exchanged and rewritten.

Slots at 50-mm/2G intervals to take slotted dividers (from drawer front height 75 mm).

Load capacity 200 kg.

**Suitable for:**

Tool cabinet casing 56×24G No. 931535.

**Supplied with:**

Drawers each complete with 1 pair drawer runner rails.

**Colour:**

Drawer body RAL 7035 light grey, drawer fronts RAL 7016 anthracite, **powder-coated. Drawer body not configurable, always RAL 7035 light grey.**

**Note:**

Only GridLine divider inserts can be used in the widths 2G, 4G, 6G, 8G, 10G or 12 G.

**Technical description**

Weight	35 kg
Drawer/pull-out shelf load capacity	200 kg
Front height	300 mm
Drawer usable area in G	56×24
Usable height	275 mm
Usable depth in G	24

Usable width in G	56
Application range	Tool cabinet
Usable depth	600 mm
Usable width	1400 mm
with individual drawer release system	no
Material thickness	1.2 mm
Drawer runner extension (partial/full extension)	100 %
Colour selection	RAL 9002, 7035, 7005, 7016, 6011, 5018, 5012, 5011, 5005, 3003
Drawer usable width × usable depth in G	56×24G
Type of product	Drawer

---

## Accessories

Handle end caps 20 pieces Type 10	951025 10
Labelling strip set 10 pieces Drawer usable width in G 56	951030 56
Pack of PVC covers for handles 10 pieces Drawer usable width in G 56	951032 56