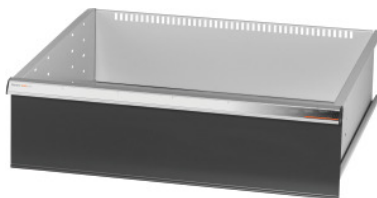


Garant GRIDLINE

Drawers for swing-door large-capacity cabinets and heavy-duty cabinets Width 30G, 26×24G, Drawer front height: 200mm



Order data

Order number	942570 200
GTIN	4062406067779
Item class	9GI

Description

Version:

Drawers for incorporating in GridLine **swing-door** large-capacity cabinets and heavy-duty cabinets.

Aluminium handles with labelling strips that can be exchanged and rewritten. New type of drawer concept for optimum equipment with dividing material.

Suitable for:

Cabinets No. 941001 – 941033; No. 942301 – 942323; No. 942701 – 942723, No. 942802 – 942824.

Colour:

Drawer body RAL 7035 light grey, drawer fronts RAL 7016 anthracite, **powder-coated. Drawer body not configurable, always RAL 7035 light grey.**

Note:

Size 30 and size 40 are suitable for cabinets of width 60G and 80G, since these have 2 compartments.

Drawers not suitable for sliding door cabinets.

Technical description

Weight	11 kg
Usable height	175 mm
Usable depth in G	24
Usable width in G	26

Usable width	650 mm
Usable depth	600 mm
Material thickness	0.9 mm
Drawer/pull-out shelf load capacity	75 kg
Drawer runner extension (partial/full extension)	100 %
Colour selection	RAL 9002, 7035, 7005, 7016, 6011, 5018, 5012, 5011, 5005, 3003
Drawer usable width × usable depth in G	26×24G
Type of product	Drawer

Accessories

Ribbed rubber mat for drawers Dimension in G 26X24	951910 26X24
Non-slip mats set for drawers,5 pieces Dimension in G 26X24	951885 26X24
Mat for drawers Dimension in G 26X24	951830 26X24