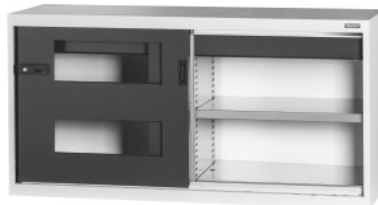


Garant GRIDLINE

Base cabinet with drawer, Viewing window sliding doors, 26×14G, Height: 800mm



Order data

| | |
|--------------|---------------|
| Order number | 940187 800 |
| GTIN | 4062406069919 |
| Item class | 9GI |

Description

Version:

Equipped cabinet in 60×20G, with drawers 26×14G. Mountings for shelves at 25 mm intervals. Sliding doors reinforced on the inside and can be locked by 2-component Haptoprene® handle using a cylinder lock. Locks the sliding doors in the end positions (open/closed). **Levelling base** for base cabinets, with 8 individually adjustable feet to compensate for unevenness in the floor. In the base cabinet the handle is mounted in the upper part of the door; in the top-mounted cabinet it is in the lower part of the door.

drawers with front height 125 mm.

Supplied with:

Cabinet with shelves and drawers.

Colour:

Body and drawer cabinet body RAL 7035 light grey, doors and drawer fronts RAL 7016 anthracite **powder-coated**.

Note:

For storage shelves and accessories for GridLine cabinets see No. 940501 – 940710 and Group 95. According to the TÜV GS certification, it is essential that all cabinets are secured against tipping over.

Technical description

| | |
|--------------------------|---------|
| Drawer usable depth in G | 14 |
| Width | 1500 mm |

| | |
|---|--|
| Number of drawers | 2 |
| Weight | 93 kg |
| Drawer usable depth | 350 mm |
| Handle positioning | top |
| ComfortClose | no |
| Drawer runner extension (partial/full extension) | 100 % |
| Drawer usable area in G | 26×14 |
| Drawer usable width | 650 mm |
| Height | 800 mm |
| Number of shelves | 2 |
| Width in G | 60 |
| Electronic locking system can be retrofitted | yes |
| Drawer usable width in G | 26 |
| Shelf load capacity / maximum distributed shelf load (on metal) | 100 kg |
| Drawer/pull-out shelf load capacity | 75 kg |
| Depth in G | 20 |
| Depth | 500 mm |
| Usable height | 663 mm |
| Material thickness | 0.9 mm |
| Cabinet housing internal load capacity | 1000 kg |
| Height adjustment interval | 25 mm |
| Cylinder lock | modular barrel |
| Colour selection | RAL 9002, 7035, 7005, 7016, 6011, 5018, 5012, 5011, 5005, 3003 |
| Drawer usable width × usable depth in G | 26×14G |
| Type of cabinet | Base cabinet |
| Type of product | Cabinet with shelves |

Accessories

| | |
|--|----------------|
| Drawer for sliding door cabinets,Width 30G Drawer front height 300 mm | 940651 300 |
| Drawer for sliding door cabinets,Width 30G Drawer front height 150 mm | 940651 150 |
| Storage shelf for cabinet / compartment width in G 30 | 940550 30 |
| Storage shelf200 kg for cabinet / compartment width in G 30 | 940590 30 |
| Drawer for sliding door cabinets,Width 30G Drawer front height 200 mm | 940651 200 |
| Drawer for sliding door cabinets,Width 30G Drawer front height 75 mm | 940651 75 |
| Comfort Close drawer closure damping system Load capacity of the drawer 75 kg | 950180 75 |
| Drawer for sliding door cabinets,Width 30G Drawer front height 100 mm | 940651 100 |
| Drawer for sliding door cabinets,Width 30G Drawer front height 125 mm | 940651 125 |
| Cover made of laminated wood Dimension in G 60X20 | 951985 60X20 |
| Lock plate for GridLine Type GP21 | 914227 GP21 |
| Cover made of bamboo Dimension in G 60X20 | 951980 60X20 |
| Base with removable fascia, depth 20G,Height 150 mm Cabinet casing in G 60 | 958146 60 |
| Storage shelf slotted for cabinet / compartment width in G 30 | 940552 30 |
| Inclined shelf for cabinet / compartment width in G 30 | 940560 30 |
| Extended lighting set for GridLine cabinets withSliding doors, width 60G for cabinet height 750/800 mm | 940514 750/800 |