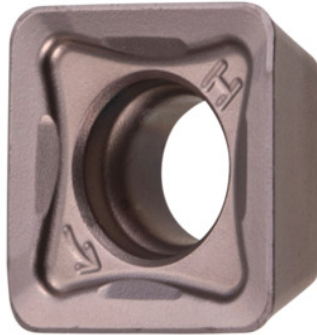


**Garant**
**SOMT 083608 PDER, HB7520, Type: ST1400**


## Order data

Order number	214929 ST1400
GTIN	4045197706638
Item class	21A

## Description

### Version:

Increased insert thickness permits markedly deep trough geometry for positive cutting action, and minimises the susceptibility to fracture.

### Note:

Standard application values for  $a_e = 0.3 \times D$ .

Corner radius: 0.8 mm

Feed  $f_z$  per tooth: 0.17 mm

## Technical description

Feed $f_z$ per tooth	0.17 mm
Type	ST1400
Corner radius	0.8 mm
ISO code indexable insert	SOMT 083608 PDER
Grade	HB7520
Tool material	Carbide

Number of changes/inserts	4
Type of product	Indexable insert for milling

**User data**

	<b>Suitability</b>	<b>V<sub>c</sub></b>	<b>ISO code</b>
Steel < 1100 N/mm <sup>2</sup>	suitable	180 m/min	P
Steel < 1400 N/mm <sup>2</sup>	suitable	140 m/min	P
wet maximum	suitable only under restricted conditions		
dry	suitable		