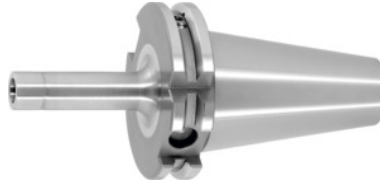


Garant
Arbor for screw-in milling cutters with thread, SK 40, Thread M × Length L1: M8X25

Order data

Order number	301309 M8X25
GTIN	4045197706690
Item class	31A

Description
Version:

Plain design.

Application:

To take screw-in milling cutters with thread.

Optional extras:

Pull studs (PS) No. 308600 – 308806, PS wrenches No. 308820 – 308835.

Technical description

Overhang dimension A	44 mm
Ø D ₂	13 mm
L ₂	5 mm
Bore Ø D ₁ tolerance IT6	8.5 mm
Reach L ₁	25 mm
Thread M	M8×25
External Ø D	15 mm
Adapter	SK 40
Arbor standard	ISO 7388-1

Shape	ADB
Balance quality G at rotational speed	G 2.5 at 25,000 rpm
Concentricity	≤ 3 μm
Machining strategy	HSC
Type of product	Threaded copy mill arbor

Accessories

Pull studMori-Seiki, sealed, form A suitable for steep tapers 40	308625 40
Hurco 45° pull stud with 4-mm bore and fitsealed suitable for steep tapers 40	308801 40
Pull stud 90°sealed suitable for steep tapers 40	308795 40
Pull stud 90°sealed suitable for steep tapers 40	308790 40
Pull stud, 18CrNiMo7Form A suitable for steep tapers 40	308605 40
Pull stud 45°sealed suitable for steep tapers 40	308760 40
Pull studsealed, form A suitable for steep tapers 40	308610 40
Pull studsealed, form B suitable for steep tapers 40	308650 40
Special pull stud with no internal threadsealed suitable for steep tapers 40	308700 40
Pull studsealed suitable for steep tapers 40	308635 40
Wrench for pull studsDIN ISO 7388-1 (formerly DIN 69872) suitable for ISO taper size 40	308820 40
Pull studMori-Seiki, sealed, form A suitable for steep tapers 40	308630 40
Pull studForm B suitable for steep tapers 40	308640 40
Pull stud, 18CrNiMo7sealed, form B suitable for steep tapers 40	308615 40
Wrench for pull studsISO 7388 suitable for ISO taper size 40	308830 40
Pull studsealed, form B suitable for steep tapers 40	308620 40
Pull stud 60°sealed suitable for steep tapers 40	308785 40

Pull stud Hurco 90° with fitsealed suitable for steep tapers 40	308806 40
Pull studMazak, form A suitable for steep tapers 40M	308670 40M
Pull stud Hurco 45° with fitsealed suitable for steep tapers 40	308802 40
Pull studForm A suitable for steep tapers 40	308600 40
Pull stud 45°sealed suitable for steep tapers 40	308765 40
Pull studsealed suitable for steep tapers 40	308660 40
Special pull stud with internal thread suitable for steep tapers 40	308740 40