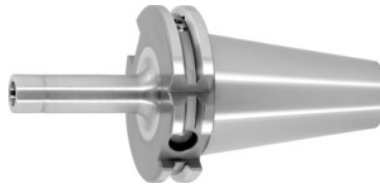


**Garant**
**Arbor for screw-in milling cutters with thread, SK 40, Thread M × Length L1: M8X75**

**Order data**

Order number	301309 M8X75
GTIN	4045197706713
Item class	31A

**Description**
**Version:**

Plain design.

**Application:**

To take screw-in milling cutters with thread.

**Optional extras:**

Pull studs (PS) No. 308600 – 308806, PS wrenches No. 308820 – 308835.

**Technical description**

Ø D <sub>2</sub>	13 mm
L <sub>2</sub>	5 mm
Bore Ø D <sub>1</sub> tolerance IT6	8.5 mm
Thread M	M8x75
Reach L <sub>1</sub>	75 mm
Overhang dimension A	94 mm
External Ø D	23 mm
Adapter	SK 40
Arbor standard	ISO 7388-1

Shape	ADB
Balance quality G at rotational speed	G 2.5 at 25,000 rpm
Concentricity	≤ 3 μm
Machining strategy	HSC
Type of product	Threaded copy mill arbor

## Accessories

Special pull stud with no internal threadsealed suitable for steep tapers 40	308700 40
Pull studsealed, form B suitable for steep tapers 40	308620 40
Wrench for pull studsISO 7388 suitable for ISO taper size 40	308830 40
Pull stud Hurco 45° with fitsealed suitable for steep tapers 40	308802 40
Pull stud 90°sealed suitable for steep tapers 40	308795 40
Special pull stud with internal thread suitable for steep tapers 40	308740 40
Pull studMori-Seiki, sealed, form A suitable for steep tapers 40	308625 40
Pull studsealed suitable for steep tapers 40	308635 40
Pull stud, 18CrNiMo7Form A suitable for steep tapers 40	308605 40
Pull stud 90°sealed suitable for steep tapers 40	308790 40
Pull studsealed suitable for steep tapers 40	308660 40
Pull stud 45°sealed suitable for steep tapers 40	308760 40
Pull studForm A suitable for steep tapers 40	308600 40
Pull studMazak, form A suitable for steep tapers 40M	308670 40M
Pull studsealed, form A suitable for steep tapers 40	308610 40
Pull stud 45°sealed suitable for steep tapers 40	308765 40
Pull stud, 18CrNiMo7sealed, form B suitable for steep tapers 40	308615 40

Pull studsealed, form B suitable for steep tapers 40	308650 40
Pull stud Hurco 90° with fitsealed suitable for steep tapers 40	308806 40
Wrench for pull studsDIN ISO 7388-1 (formerly DIN 69872) suitable for ISO taper size 40	308820 40
Pull studMori-Seiki, sealed, form A suitable for steep tapers 40	308630 40
Pull stud 60°sealed suitable for steep tapers 40	308785 40
Pull studForm B suitable for steep tapers 40	308640 40
Hurco 45° pull stud with 4-mm bore and fitsealed suitable for steep tapers 40	308801 40